

Carrytank®

PETROL

ES TANKS AUSTRALIA

PH:1300 018 558

EMAIL:

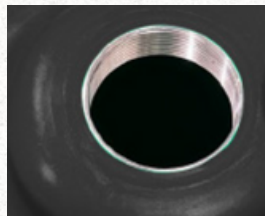
info@estanksaustralia.com.au

WEBSITE:

<https://estanksaustralia.com.au/>



- ECEx Pumps made by **Piusi** Model EX, DC Battery Pump 12 Volt
- Flow Rate 30 liters / minute. Remote control (on/off switch) and long cables (5mt)
- Ground cable with claps
- Automatic Nozzle (Automatic switch-off system) and Drip Tray.
- Length of hose: 3 meters Antistatic hose.
- Filling cup with integrated non-spill vent.
- Level Indicator



Safe and easy transportation. Integral recesses for ratchet lashing strap to immobilize the tanks on vehicle during the transport.

Long product life and safety Aluminium threads.

No lack of Fuel Level Indicator

SIZE: 150 Litres

150 litres Poly IBC approved tank for transport of Petrol with 12-volt pump IECEx approved.

Includes hose and auto nozzle.



Easy handling Forklift pockets for lifting fully loaded from below



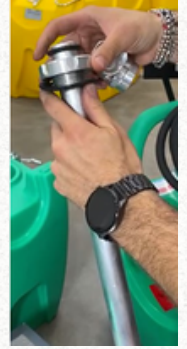
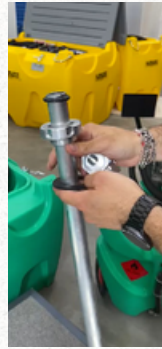
Long product life and safety Metal inserts and fittings melted directly into the plastic during the rotomoulding process



Carrytank®

PETROL

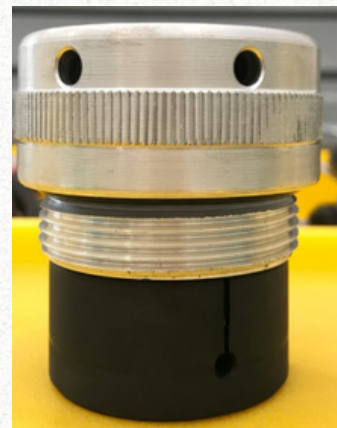
ES TANKS AUSTRALIA



Easy maintenance and operations. No leakages.
New plug in connections and swivels.

Spinning connection on the top easy maintenance and operations. No leakages.
Aluminum Swivel on the top part of Suction pipe.

No Fuel Contamination.
New plug in suction pipe made of Aluminum with Safe O ring seals without the addition of silicones.



Professional Vent / Filling Cap
Professional Vent / Filling Cap, Equipped with Emergency 3 way valve (Pressure, Vacuum and Anti Spill out during the transport and even in case of roll over.). Benefit: Safety, no contamination and vehicle cleaning.

Lockable Lid.
Security and protection against break in.

The new drip tray
The new drip tray protects the parts most subjected to shocks and friction and collects the diesel drops that drip from the nozzle.

Code	Size	Pump	Description	Dimensions	Weight	Medium wall thickness
ES-CTKL50JE	150L	IECEX Pumps made by Piusi Model EX, DC Battery Pump 12 Volt, Flow Rate 30 liters / minute. Remote control (on/off switch) and long cables (5mt)	Poly IBC approved tank for transport of Petrol with 12-volt pump IECEX approved. Includes hose and auto nozzle.	980 L x 585 W x 465 mm H	30Kg	7mm