

Carrytank®

DIESEL



ES TANKS AUSTRALIA

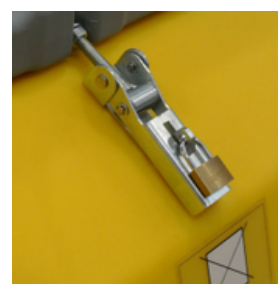
PH:1300 018 558

EMAIL:

info@estanksaustralia.com.au

WEBSITE:

<https://estanksaustralia.com.au/>



Sizes: 150, 220, 440, 600, 900

Carrytank® a polyethylene tank for the transport of diesel fuel with lockable lid. The new tank with patent pending has successfully passed the toughest stress tests in order to obtain the ADR/RID/ADN and IMDG approval for fuel transport.

Since it is a tank intended for the transport, the design research has also focused on logistics, with the aim of making its handling faster and more efficient. For this reason, the tank, in addition to the forklift pockets, is also equipped with 4 lifting lugs for lifting tank at full load from above, ensuring full stackability during the storage

- **Piusi** 60l/min or 40l/min Pump, 12v
- Automatic Nozzle
- Padlockable lid & reinforced closure
- Safety valve
- Aluminium filling plug
- Forklift pockets
- Recess for securing straps to the support base
- 4 certified eyebolts for lifting at full load
- 4m hose
- Fuel level gauge



Carrytank®

DIESEL

ES TANKS AUSTRALIA

PH:1300 018 558

EMAIL:

info@estanksaustralia.com.au

WEBSITE:

<https://estanksaustralia.com.au/>

Additional options available for Carrytank®

ES Filter



Battery Pack



M24 Flow Pack



Model	Diesel capacity	Dimensions	Thickness (mm)	Weight with pump unit (kg)
CT150	150	985W X 585D X 465H		35
CT220	220	600W x 910D x 656H	5	24
CT440	440	1,200W x 800D x 785H	6.5	52
CTK600	600	1,2900W X 860D X 940H	11	77
CTK900	900	1530W X 1,150D X 910H	10	110

